

Departement Bau
Tiefbauamt

Stadt Winterthur 

Rosentalbach

Rütlistrasse bis Waldrand








Hochwassersicherer Ausbau und Ersatzeindolung,
Projekt-Nr. 50191, 50033

Winterthur, öffentliches Gewässer Nr. 202
Gewässerraum-Festlegung 1:500

Auflageprojekt

16

Legende

-  Gewässerraum
-  offen / eingedolt ohne eigene Parzelle
-  projektierte Grenze
-  Rosentalbach
-  202.0
-  Bachname
-  Bachnummer

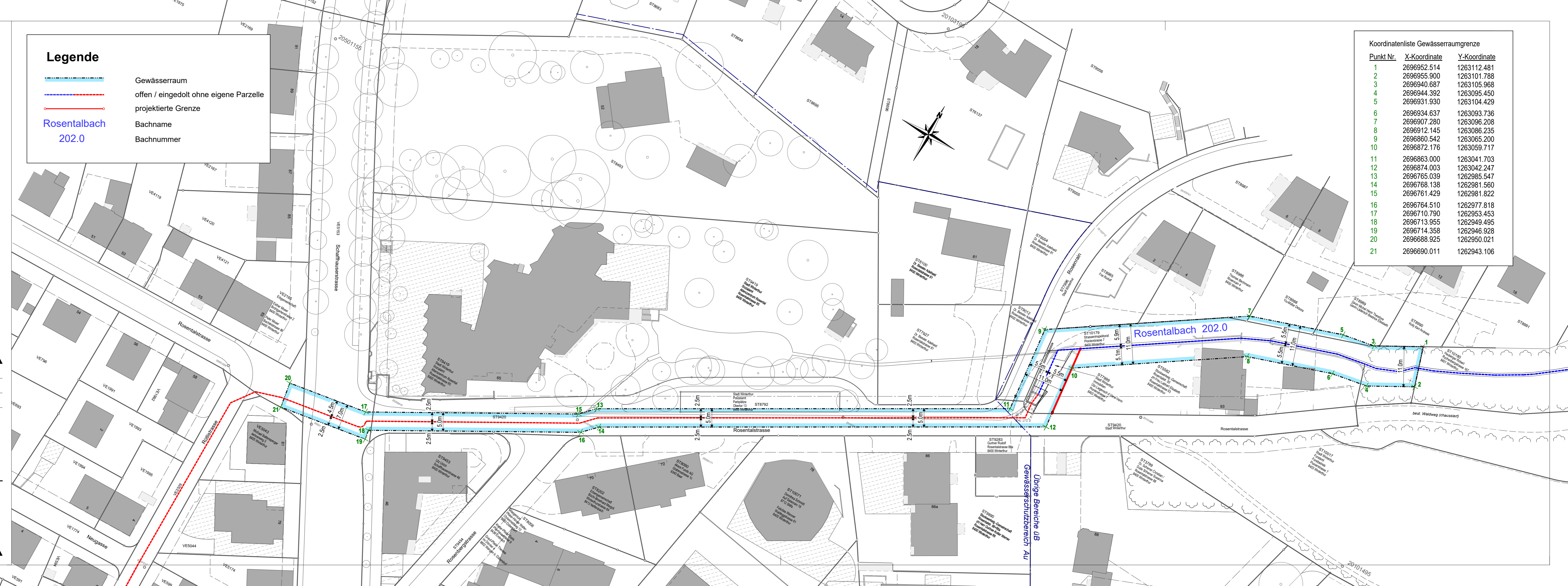
Koordinatenliste Gewässerraumgrenze

Punkt Nr.	X-Koordinate	Y-Koordinate
1	2696952.514	1263112.481
2	2696955.900	1263101.788
3	2696940.687	1263105.968
4	2696944.392	1263095.450
5	2696931.930	1263104.429
6	2696934.637	1263093.736
7	2696907.280	1263096.208
8	2696912.145	1263086.235
9	2696860.542	1263065.200
10	2696872.176	1263059.717
11	2696863.000	1263041.703
12	2696874.003	1263042.247
13	2696765.039	1262985.547
14	2696768.138	1262981.560
15	2696761.429	1262981.822
16	2696764.510	1262977.818
17	2696710.790	1262953.453
18	2696713.955	1262949.495
19	2696714.358	1262946.928
20	2696688.925	1262950.021
21	2696690.011	1262943.106

Gez. mar	Datum 12.02.2021	Plan Nr. 10073 - 4466
Gepr. cko / oe	Plan Gr. 30 / 105	Objekt Nr. 50191, 50033
Änderungen		
A		
B		
C		
D		
E		

HUNZIKER BETATECH

Hunziker Betatech AG
Pflanzschulstrasse 17
8400 Winterthur
Tel. 052 234 50 50
Fax 052 234 50 99
www.hunziker-betatech.ch



Gewässerschutzbereich UB

20101495